

FILMED IN NORWAY  
DESIGNER: BOB SMART  
MUSIC: JOHNNY PEARSON  
DIRECTOR: DAVID MALONEY

BBC-TV Series  
and Serials Dept  
presents

# Maelstrom

A MYSTERY by MICHAEL J BIRD

starring

TUSSE SILBERG - DAVID BEAMES  
SUSAN GILMORE - EDITA BRYCHTA  
CHRISTOPHER SCOLAR  
and  
ANN TODD

Producer: Vere Lorrimer, Room 109, Threshold House  
BBC-TV Centre, Wood Lane, London W12 7RJ  
Telephone: 01-743 8000 extensions 1492/4193

I N D E X

Page 2	.....	The Cast
3	.....	Introduction
4	.....	The Story
5	.....	The Location
6-12	.....	Biographies & pictures
13	.....	The Director
14	.....	The Author
15	.....	The Composer
16	.....	Designer and Producer
17-18	.....	Production credits
19-20	.....	Artistes and Agents

TRANSMISSIONS ON BBC-1, 1985

Ep.1	An Ill Wind	Tues 5 Feb at 8.10pm
Ep.2	Shadows	Tues 12 Feb at 8.00pm
Ep.3	In Possession	Tues 19 Feb at 8.00pm
Ep.4	House of Secrets	Tues 26 Feb at 8.00pm
Ep.5	Into the Vortex	Tues 5 March at 8.00pm
Ep.6	Out of the Depths	Tues 12 March at 8.00pm

A BEC-TV Production in association with Gryphon Productions Ltd.
---

SHE INHERITED AN ISLAND: A LEGACY OF LOVE . . . . . AND DEATHCAST

TUSSE SILBERG	as CATHERINE DURRELL
DAVID BEAMES	as ANDERS BJORNSON
SUSAN GILMORE	as ANNA MARIE JORDAHL
CHRISTOPHER SCOULAR	as LARS NILSEN
EDITA BRYCHTA	as INGRID NILSEN
TREVOR BAXTER	as DR. ALBRIGSTEN
LORNA LEWIS	as LIV ALBRIGSTEN
JOHN ABINERI	as OLAV TUNHEIM
PAUL DARROW	as OLIVER BRIDEWELL
JOHN ROWE	as STODDARD
PETER TUDDENHAM	as BJARNA LANGVA
SHEERLAH WILCOCKS	as GERDA
THOMASINE HEINER	as BRIGIT TOVAN
THANE BETTANY	as EIVIND TOVAN
ALAN MACNAUGHTAN	as PROFESSOR SOLBERG
MARISA CAMPBELL	as THE WOMAN

andANN TODDas ASTRID LINDERMAN

M A E L S T R O M

6 x 50' episodes with exteriors filmed in Norway and studio inserts shot at BBC-TV Glasgow.

MAELSTROM is a 6-part mystery from MICHAEL J. BIRD, one of the screen's most successful story-tellers. His previous work has included the popular BBC-TV drama serials WHO PAYS THE FERRYMAN?, THE APHRODITE INHERITANCE, THE LOTUS EATERS and THE DARK SIDE OF THE SUN. These were notable for their evocative Greek backgrounds but this new serial provides an exciting change: the magnificent fjords of Western Norway.

MAELSTROM is the Scandinavian word for 'whirlpool' and derives from a natural phenomenon of that name off the northwest coast of Norway.



TUSSE SILBERG

and

DAVID BEAMES

in

"MAELSTROM"

THE STORY

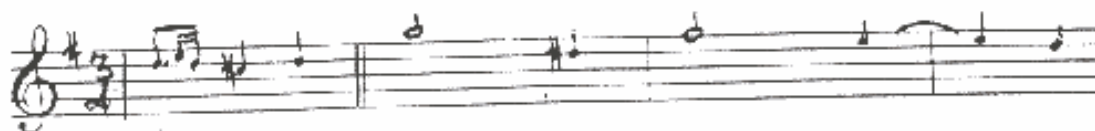
CATHERINE DURRELL, an Accounts Executive, is unexpectedly made redundant. A more agreeable surprise is in store when she learns that by an inexplicable whim of a drowned man she has been left a fortune in Norway. Who was this man - and why was she chosen as beneficiary? To find the answer Catherine travels to Alesund, the beautiful capital of the Sunnmøre region. Here she meets an attractive journalist - and the members of a rich and powerful family whose welcoming smiles conceal a secret. It is not long before she is involved in a strange series of events which culminate in a vortex of terror .....

THE BOOK

The book of the serial, published by BEC Publications and also written by Michael J. Bird, will be available from bookshops in Spring 1985.

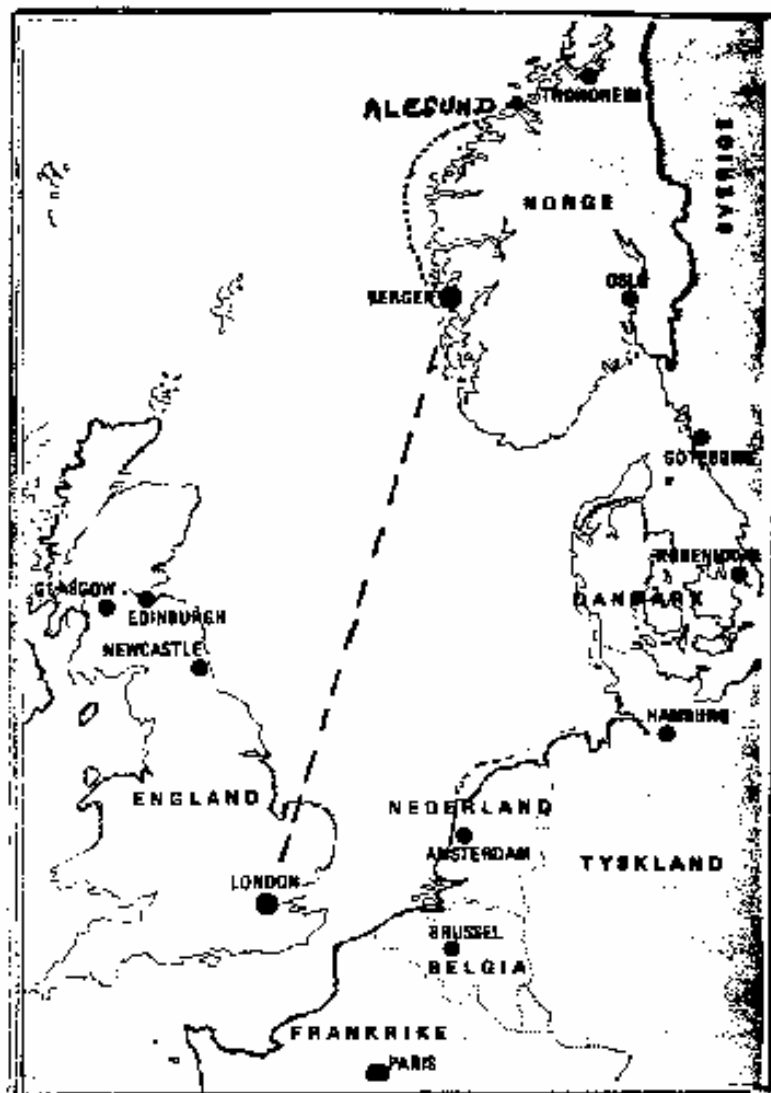
THE MUSIC

Written and conducted by JOHNNY PEARSON who will be remembered for his delightful music for the successful series ALL CREATURES GREAT AND SMALL.



INTRO:

" THE CAMELLIA WALTZ " - HEARD IN THE HOUSE ON THE ISLAND...

WHERE THE STORY TAKES PLACE .....

This map shows Catherine's route by air to Bergen and by coastal steamer to Ålesund (pronounced 'Awlsun').

ÅLESUND is Norway's eleventh largest town and is actually built on five islands linked by bridges. It is one of 18 ports on the daily steamer route running north from Bergen to the Arctic Circle and the Russian border. It is also an area of valleys and meadows with a fjord never far from your doorstep. The population is 40,000.

Catherine Durrell

An Account  
Executive,  
attractive and  
independent.



Played  
by  
TUSSE SILBERG

Tusse Silberg was born in Stockholm of Lithuanian and Danish parents. A strong artistic vein obviously ran in the family since her father produced the first commercial picture postcards in Helsinki. Later, the family emigrated to Britain.

Tusse's first ambition was to be a dancer and she studied for three years at London's Drama Centre. Then she married and her career had to stop while she brought up two boys, Sam and Finn. Eventually Tusse was able to pick up the reins again and began with roles at Glasgow's Citizen's Theatre and the London Roundhouse. A variety of stage roles followed, interspersed with fruit-picking, restoring antiques and driving a van! Luckily an agent spotted her and things started to happen. Television took over her life with roles such as 'Alexandra' in SMILEY'S PEOPLE and 'Maria Schultz' in REILLY ACE OF SPIES. Film work has included MAIDEN, MAIDEN, CURSE OF THE PINK PANTHER, GORKY PARK with Lee Marvin, and leads in FLIGHT TO BERLIN and COMPANY OF WOLVES

The part of 'Catherine' in MAELSTROM was particularly exciting for Tusse as it brought her back to Scandinavia where her own life began. Today she lives in Hampstead with her family. In her spare time she helps disabled kids to swim. Her other activities are riding and watching old movies.

Anders Bjornson

Norwegian  
journalist,  
humorous and  
resourceful.



Played  
by

DAVID BEAMES

David was born in Winchester and read Law at Southampton University - for seven weeks. He then fell in love with a beautiful actress who was going to Bristol Old Vic Drama School. So David joined the same school. He didn't get the girl - but got the inspiration to study acting seriously. His first break was juvenile lead at Salisbury Playhouse which led in turn to seasons at Liverpool Playhouse and Nottingham Playhouse. After this David toured with Jimmy Jewell in COMEDIANS which ended its run at the Old Vic in London. Then followed two years of television in such series as ENEMY AT THE DOOR, WINGS and ACCIDENT. Prior to MAELSTROM he was back on stage at the Arts Theatre playing the lead in Pam Gem's comedy LOVING WOMEN.

David's hobbies include covering trials at the Old Bailey (a left-over from his law days) and cultivating his Hampstead garden which he describes as a "smallholding at the back". In between acting he plays guitar and sings with a group and he has a remarkable collection of musicals of the fifties.



Anna Marie Jordahl

A sophisticated and self-assured furniture designer. A Co-Director of Jordahl Industries.



Played  
by

SUSAN GILMORE

Susan was born in Chiswick, London, of theatrical parents. With such a background it was inevitable that Susan should make a career on the stage. Indeed she remembers being "frog-marched, aged 3, to ballet classes"! At Bristol University however, where she graduated with Honours, it was the spoken word that attracted her. She determined to be an actress and worked during holiday periods as a nanny in Switzerland which paid her way through Drama School. Her first job came in 1978 with the English Theatre Company in Vienna as Sheila Birling in AN INSPECTOR CALLS. At the National Theatre she played in Stoppard's UNDISCOVERED COUNTRY, Shaffer's AMADEUS and AS YOU LIKE IT. Then came 1½ years as Nurse Fitt in the BBC-TV serial ANGELS, followed by BALHAZAR at the Duke of York's Theatre and BEETHOVEN'S TENTH at the Vaudeville. In February director David Maloney saw her play the lead in MAN OF MODE at Richmond's Orange Tree Theatre and on the spot cast her as Anna Marie in MAELSTROM.

Susan's brother is a TV comedy producer in Scotland and her sister - still at Drama School - leads a group called 'Betty and the Bombshells'. Susan speaks fluent French and German, lives in a bohemian flat in Pimlico and collects Victoriana.

Lars Nilsen

Young business  
Executive.  
Husband of  
Ingrid.



Played  
by

CHRISTOPHER SCOULAR

Christopher was born in Arbroath, Angus and from boyhood showed interest in the stage. His parents hopefully thought such leanings would "die a natural death". But one summer, while on vacation from London University, he joined an amateur group which toured Denmark, Sweden, Finland and Russia. After this there could only be one career for him. Having taken his degree Chris wrote off 60 letters to repertory companies and got one reply: to join the Queen's Theatre, Hornchurch as ASM. More recent credits however include the film AN AMERICAN WEREWOLF IN LONDON, Agatha Christie's A MURDER IS ANNOUNCED at the Vaudeville Theatre, and on television: MISS JONES AND SON, LOVE IN A COLD CLIMATE, MAYBURY, THE SEVEN DIALS MYSTERY, JURY and THE DARK SIDE OF THE SUN.

Chris lives in South London and has an unusual hobby: collecting 'Art' postage stamps. Should you be invited for tea, you'll find he is also an expert on homemade meringues!

Ingrid Nilsen

Younger sister  
to Anna Marie.  
Highly-strung,  
insecure.  
Co-Director  
of Jordahl  
Industries.



Played  
by

EDITA BRYCHTA

Edita was born in Prague in 1961. Her father and mother, both painters and designers, were prominent in art circles and Edita herself appeared as a child artiste in several Czech films. In 1968 came the Russian occupation. Edita's father decided to take the family to Britain. Just as the borders were being sealed they pretended to be going on a swimming trip and slipped out of the country. They arrived in London as autumn approached, with just £5 in cash, no extra clothes beyond their swimsuits, and no English! Luckily art is international and the family soon began to earn a living, her father eventually becoming one of the illustrators for 'Jackanory' on BBC-TV. Later her brother found himself at the National Film School, while Edita went to the London Academy of Dramatic Art where she was seen as Juliet. This led to a small part in the BBC-TV production of PERICLES. She then played several roles at the Nuffield Theatre Southampton, one of which - Sybil Burlington, the bad girl in DAISY PULLS IT OFF - was so successful that it brought her to the Globe Theatre in London. "Bad girls are good parts" - says Edita! Then came Ophelia in HAMLET at Birmingham Repertory opposite Simon Cadell - and MAELSTROM.

Edita's greatest interest apart from acting is ornithology, and she is also an expert at creating ceramics and "other weird objects"!

Astrid Linderman

Formidable Great Aunt  
of the Jordahl sisters.  
Retired headmistress.



Played  
by

ANN TODD

Ann Todd trained at the Central School of Speech and Drama and her early starring roles in the theatre included the name parts in PETER PAN (Winter Garden Theatre 1942); LOTTIE DUNDAS (Vaudeville Theatre 1943) and Madeline Smith THE REST IS SILENCE (Prince of Wales Theatre 1944). In 1945 she became famous overnight internationally when she starred opposite James Mason in the film THE SEVENTH VEIL.

From the mid-1940's to the mid-60's her name was over the title in many productions in the West End and on Broadway, including THE SEVENTH VEIL (Princes Theatre 1951); FOREIGN FIELD (1953); Old Vic season (1954/5) playing Lady Macbeth and Katherine in Taming of the Shrew; THE DOCTOR'S DILEMMA (Saville Theatre 1956); FOUR WINDS New York 1957); DUEL OF ANGELS (London 1958). Starring films during this period included DAYBREAK, THE PARADINE CASE, SO EVIL MY LOVE, THE SOUND BARRIER, TIME WITHOUT PITY, THE GREEN SCARF and TASTE OF FEAR.

From 1964/76 she took a break from acting to write and produce for the Rank Organisation. These included films set in Nepal, Greece, Egypt, Australia, Jordan and Iona. In 1979 she appeared in Otto Preminger's THE HUMAN FACTOR.

During a long and successful career she has numbered many fellow stars amongst her close friends, especially Ingrid Bergman, David Niven and James Mason. Two years ago Ann published her autobiography under the title THE EIGHTH VEIL. Formerly married to film director Sir David Lean she now lives in West London and includes among her recreations travelling, writing, painting and gardening.

Dr. Albrigsten

Friendly and  
compassionate.  
Family GP.  
Confidant to  
Astrid and  
the Jordahls.



Played  
by

TREVOR BAXTER

Trevor was born in Bellingham, South London and showed early promise by winning a scholarship to Dulwich College. His Classics master noting his writing skills and aptitude for Shakespeare encouraged him to such good effect that at age 16 he won a scholarship to RADA where his classmates included Gerald Harper and Joan Collins. His first job was in Rep at the County Theatre Aylesbury - which promptly showed signs of imminent bankruptcy. Trevor organised a Sausage Supper to "Save the Theatre" which raised 14/9d. The theatre closed.

After this however, things started looking up: a year at Stratford's Royal Shakespeare Company, 2 years on the West of England Company circuit with Joan Flowright, a tour of South America for H.M. Tennant Ltd., 2 years at the Liverpool Playhouse, 4 years with the Prospect/Old Vic Company ... and back to the RSC at Stratford (Capulet in ROMEO & JULIET, the Banished Duke in AS YOU LIKE IT) and finally a long run in THE CANTERBURY TALES at London's Phoenix Theatre. And sandwiched between these prestigious engagements an ever-growing number of TV appearances: SOFTLY, SOFTLY, DR.WHO, Shaw's THE APPLE CART, RUMPOLE OF THE BAILEY, GEORGE & MILDRED, THE COMMON by Peter Nicholls, DICKENS OF LONDON, THE DARK SIDE OF THE SUN - and now MAELSTROM.

As if all this was not enough there began developing those writing skills first noted by his old schoolmaster in boyhood. After breaking into radio as a scriptwriter Trevor hit the West End with LIES at the Albery Theatre starring Wendy Hiller, Michael Aldridge and Simon Cadell, and THE UNDERTAKING at the Fortune Theatre with Kenneth Williams, Miriam Karlin and Annette Crosbie, and on BBC TV a Play for Today called THE LAST EVENSONG, starring Freddie Jones and Muriel Pavlow. In 1985 Trevor will be in the USA as Honorary Professor teaching Shakespeare in American Universities. A busy life!

The Director

DAVID MALONEY

(Photographed  
on location)

David was born in the 8th century village of Alvechurch, Worcester. His first job was as a journalist on a Birmingham newspaper. After training as an actor at the Birmingham Rep. Theatre school he worked in many well known regional theatres including the Sheffield Playhouse, the Worthing 'Connaught', the Birmingham Rep. itself and finally in the West End in THE GAZEBO, the long running comedy at the Savoy Theatre. It was while acting on TV between stage engagements that David got the inspiration to direct for the small screen. He joined the BBC as a P.A. and shortly after was allocated a place on the Directors' Training Course. This led to a quartet of outstanding TV series: IVANHOE, WOODSTOCK, THE PATHFINDER and THE LAST OF THE MOHICANS. He has also directed many episodes of such shows as DR.WHO, 7 CARS and SOFTLY, SOFTLY. A spell as Producer then saw him in charge of further successes: BLAKE'S SEVEN, WHEN THE BOAT COMES IN and THE DAY OF THE TRIFFIDS. Deciding to get back behind the camera once more he recently directed ALIENS set in a wartime internment camp and two notable plays in the END OF THE LINE series from Scotland: BLOWOUT and THE SILVER BULLET.

When he was told MAELSTROM was to be set in the small Norwegian port of Alesund David surprised everyone by saying "I know the place." With his wife Edwina, a painter-etcher, he had spent a holiday there!

The Author

MICHAEL J. BIRD

(Photographed  
in Norway)

Michael J. Bird's career began in Fleet Street as a journalist on such famous papers as the Daily Herald and the Daily Mirror. In between assignments he began novel-writing and brought out 'A Town that Died', the story of the accidental explosion in World War I which wiped out a town in Nova Scotia. Later he turned to television and began a series of successes which have included episodes of THE SECRET ARMY, THE FOURTH ARM, WARSHIP, THE BROTHERS, and THE ONEDIN LINE. But his best known credits have been the quartet of Greek island thrillers THE LOTUS EATERS, THE APHRODITE INHERITANCE, WHO PAYS THE FERRYMAN? - and set on Rhodes - THE DARK SIDE OF THE SUN.

Michael lives in a lovely house in Cambridgeshire against a background of flowers and peace - a contrast indeed to his tales of tension in exotic places!

JOHNNY PEARSON - COMPOSER

Johnny Pearson was born in Woolwich, the son of a marine engineer. His mother was musical so it was not long before Johnny started picking out tunes on the white and the black notes! At age 7 he won a scholarship to the London Academy of Music where he studied under the great pianist Solomon. After that, to be on the safe side he became an apprentice toolmaker. The call of music however eventually proved too strong so Johnny, now aged 22, joined the Royal Artillery Band playing piano when sitting down and drums when standing up!

After army service Johnny became an arranger/conductor for EMI and scored for the Beatles, Cilla Black, Shirley Bassey, Dusty Springfield, the Carpenters and Esther & Abi Ofarim. He wrote the music for the Michael Winner film THE JOKERS. With his own SOUNDS ORCHESTRAL he made 20 LP's, including the hit 'Cast Your Fate to the Wind'. After this he turned to TV and became longtime Musical Director for TOP OF THE POPS. His many other successes include signature tunes for BBC-TV's OWEN MD ('Sleepy Shores'), TRIANGLE, ALL CREATURES GREAT AND SMALL, SUPERSTARS, and the celebrated opening music for ITN's NEWS AT TEN.

Johnny lives near Croydon and doesn't have far to go to write a tune: he has 2 pianos downstairs and a complete recording studio in the loft!



BOB SMART - DESIGNER

During 8 weeks in Norway Bob built the outside of a large country house on a deserted island. He also photographed over 100 examples of Norwegian furnishings which have been reproduced for the studio interiors. Such attention to detail is typical of one of Scotland's most successful Designers.

The son of a textile designer and an advertising executive, Bob achieved an Honours degree in Interior Design and quickly made his mark in TV Drama. His many notable productions include DR.FINLAY'S CASEBOOK, SUMMERSONG, THE FOURTH ARM, THE MAD DEATH and recently DRIVING AMBITION which happily reflected his real-life interests - rallying and saloon car racing. His two sons Colin and Christopher both draw and Colin is into 3-D constructions. For an artist Bob is very practical: his hobby is building cars!

VERE LORRIMER - THE PRODUCER

After Army service as Production Officer in 'Stars in Battledress' Vere became an actor at the Palace Theatre Watford and subsequently worked in Reps up and down the country. Eventually he made his headquarters in Woolwich as director of productions at the Royal Artillery Theatre, now one of London's 'lost' theatres. Here he produced and acted in a different play every week for two years!

Coming to BRC TV his early work included A LIFE OF BLISS, ERIC SYKES, and THIS IS YOUR LIFE. Later came COMPACT, Z-CARS, SOFTLY SOFTLY, DIXON OF DOCK GREEN, DOOMWATCH, THE BROTHERS, THE EXPERT, WHEN THE BOAT COMES IN and THE ENIGMA FILES. Somewhere in between he has directed the 21st and 25th productions of Agatha Christie's THE MOUSETRAP for impresario Sir Peter Saunders at the Ambassadors and St.Martin's Theatres. In 1981 he produced the space odyssey BLAKE'S SEVEN, in 1982 the Japanese P.O.W. epic TENKO and last year THE DARK SIDE OF THE SUN, also by Michael J.Bird.

PRODUCTION CREDITS

(17)

Producer	VERE LORRIMER
Producer's Secretary	LESLEY CATON
Production Associate (1)	COLIN DUDLEY
Production Associate (2)	JEREMY GWILT
Script Editor	BRIAN WRIGHT

\* \* \* \* \*

Director	DAVID MALONEY
Production Manager	DAVID ISTANCE
Production Assistant	DIANA BROOKES
A.F.M.(1)	BETH MILLWARD
A.F.M.(2)	CHRIS STANTON
Facilities Manager (Gryphon)	BRIAN KNOWLMAN

\* \* \* \* \*

Designer	BOB SMART
Design Assistant	IAIN MACDONALD
Costume Designer	DAVID BEETON
Costume Assistant	BRENDA BROWN
Dressers	DAVID SMITH ABIGAIL JOHNSON FREDA GROSS
Make-Up Designer	JANET STEELE
Make-Up Assistant	BARBARA ROBBIN

\* \* \* \* \*

TM1	ALAN HENDERSON
TM2	JOHN MORRANS
Studio Sound	BOB GILLIES
Grams Op.	JOHN GARDNER
Vision Mixer	TRICIA LEWIS
Camera Supervisor	GORDON PENFOLD

\* \* \* \* \*

Film Cameraman	ALEX SCOTT
Camera Assistant	PAUL RILEY
Film Sound Recordist	GORDON FORSYTH
Sound Assistant	FRASER BARBER
Film Editor	ROBIN CHALMERS
Assistant	GRAEME MOORE
Stunt Arranger	GARETH MILNE

\* \* \* \* \*

Videotape Editor	ALAN DIXON
Properties Buyer	MIKE IRELAND

Film Lighting Electrician  
Lighting Assistants

DAVE KINGOLEY  
GEORGE THOMAS  
GRAHAM WALKER

\* \* \* \* \*

Studio Ops.

JOE SHEPFIELD  
WILLIE TURNER  
CATRIONA DAVIS

Graphics Designer  
Visual Effects Designer  
Film Editor (2)  
Asst. Film Editor (2)

MIKE KELC  
JAMES HAMILTON  
HILARY McKUSKER-  
THOMPSON  
ANGUS McALLISTER

Dubbing Mixer

\* \* \* \* \*

Artists Contracts

PAULINE MANSFIELD-  
CLARK

Photographics Manager, Enterprises  
Script Typists  
Brochure Printing

PAMELA LARMAN  
DAPHNE WHALL  
MIKE LUXOM

\* \* \* \* \*

Norwegian Liaison

BENTE SAXON

"M A E L S T R O M"CAST AND AGENTS

<u>ARTIST</u>	<u>CHARACTER</u>	<u>AGENT</u>
TUSSE SILBERG	Catherine Durrell (Eps.1-6)	Ken McReddie 91 Regent Street London W1R 7TB 01-439 1456
DAVID BEAMES	Anders Bjornson (Eps.1-6)	Brian Wheeler 19 Strand on the Green London W4 01-995 3934
SUSAN GILMORE	Anna-Marie Jordahl (Eps.1-6)	Lyn Pays CCA Management Ltd. 4 Court Lodge 48 Sloane Square London SW1 01-730 8857
EDITA BRYCHTA	Ingrid Nilsen (Eps.1-6)	Ken McReddie 91 Regent Street London W1R 7TB 01-439 1456
CHRISTOPHER SCOULAR	Lars Nilsen (Eps.1-6)	Carole James 14 Hill Street Richmond Surrey TW9 1TN 01-940 8154
ANN TODD	Astrid Linderman (Eps.2-6)	Bryan Drew Mezzanine Quadrant House 80/82 Regent Street London W1 01-437 2293
TREVOR BAXTER	Dr. Albrigsten (Eps.1, 3, 4, 5 & 6)	Ginette Chalmers Fraser & Dunlop Ltd. 91 Regent Street London W1 01-734 7311

JOHN ROWE	Ralph Stoddard (Ep.1)	c/o BBC TV
THANE BETTANY	Eivind Tovan (Ep.3)	c/o BBC TV
THOMASINE HEINER	Brigit Tovan (Ep.3)	Ken McReddie 91 Regent Street London W1 01-439 1456
JOHN ABINERI	Olav Tunheim (Eps.1 & 4)	Bernard Hunter Leading Players 31 Kings Road London SW3 01-730 9411
SHEELAH WILCOCKS	Gerda (Eps.2, 4, 5 & 6)	Rolf Kruger 22/23 Morley House 314/322 Regent Street London W1 01-580 9432/3
PETER TUDDENHAM	Bjarne Langva (Ep.1)	c/o BBC TV
PAUL DARRCW	Oliver Bridewell (Ep.1)	Rupert Prior Howes & Prior 66 Berkeley House Hay Hill London W1X 7LH 01-493 7570
ALAN MACNAUGHTAN	Professor Solberg (Eps.5 & 6)	Bruna Zanelli Felix de Wolfe 1 Robert Street London WC2N 6BH 01-930 7514
LORNA LEWIS	Liv Albrigsten (Ep.1)	Stellaris Management 47 Greencoat Place London SW1 01-828 1678
MARISA CAMPBELL	The Woman (Ep.6)	JB Agency 7 Stonehill Mansions 8 Streatham High Road London SW16 01-677 5151